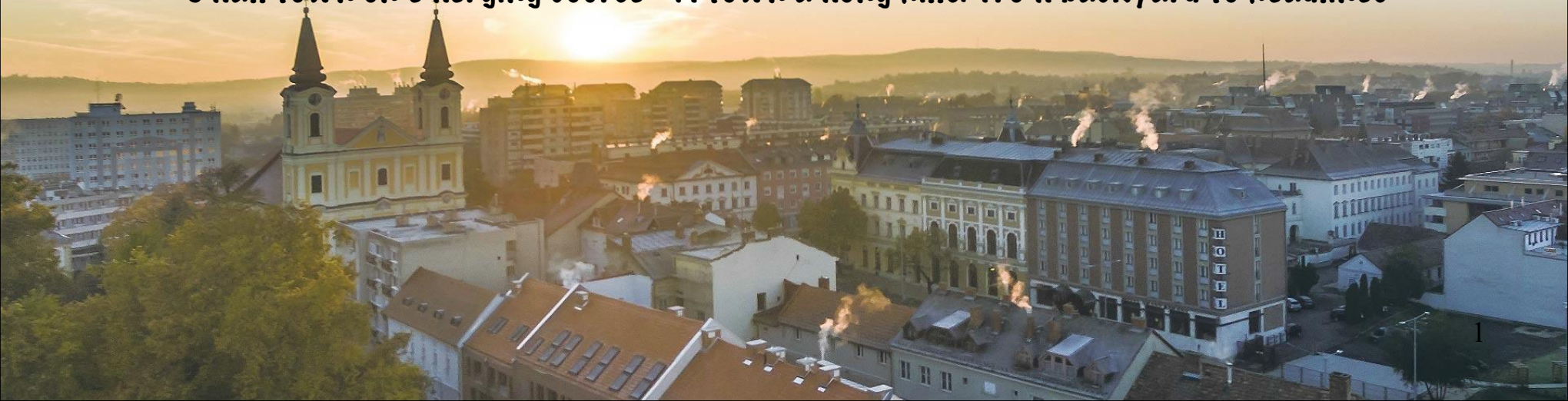


Introduction

INVESTOR PRESENTATION

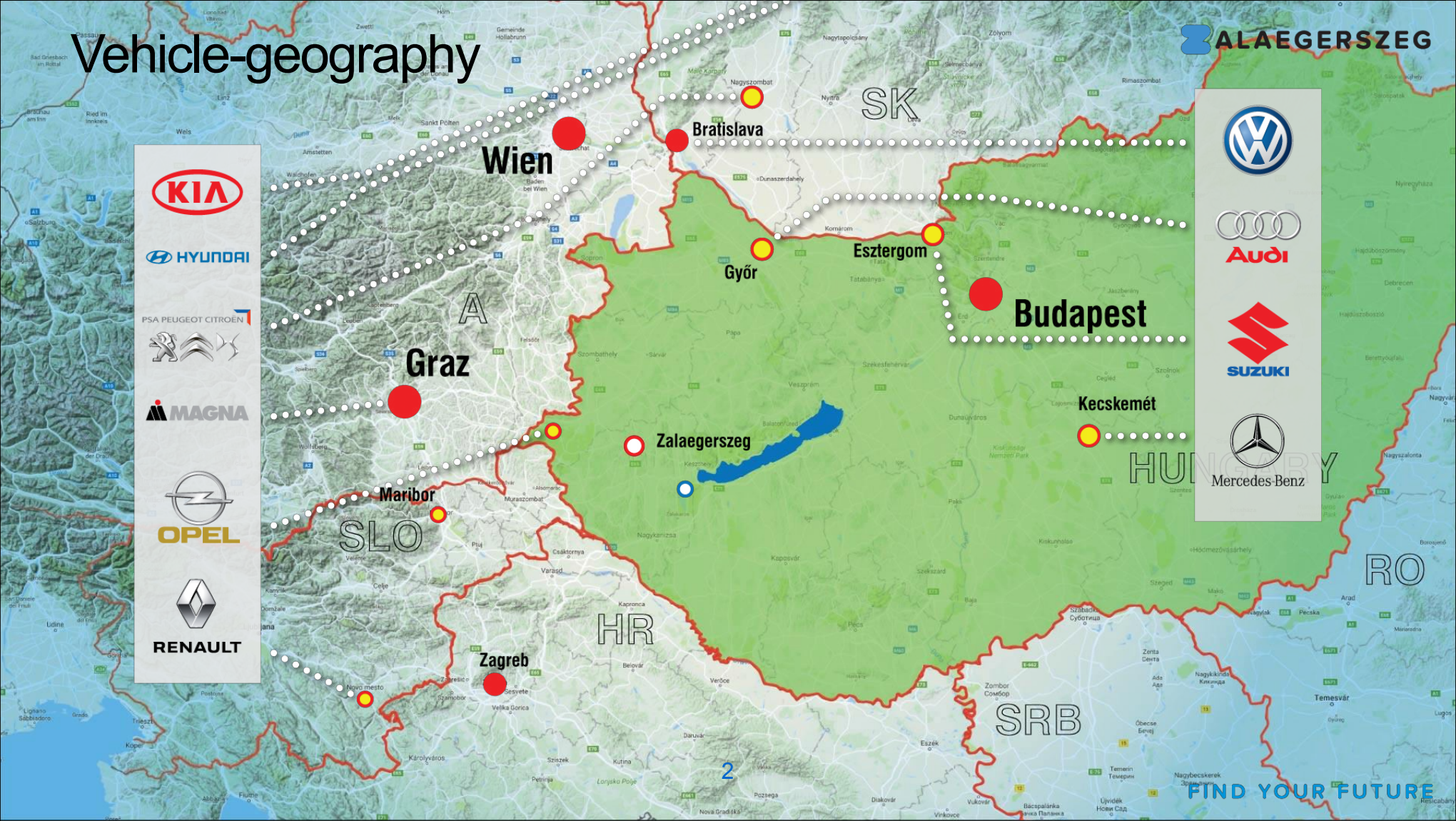


Small town on emerging course - A town among hills: from backyard to headlines



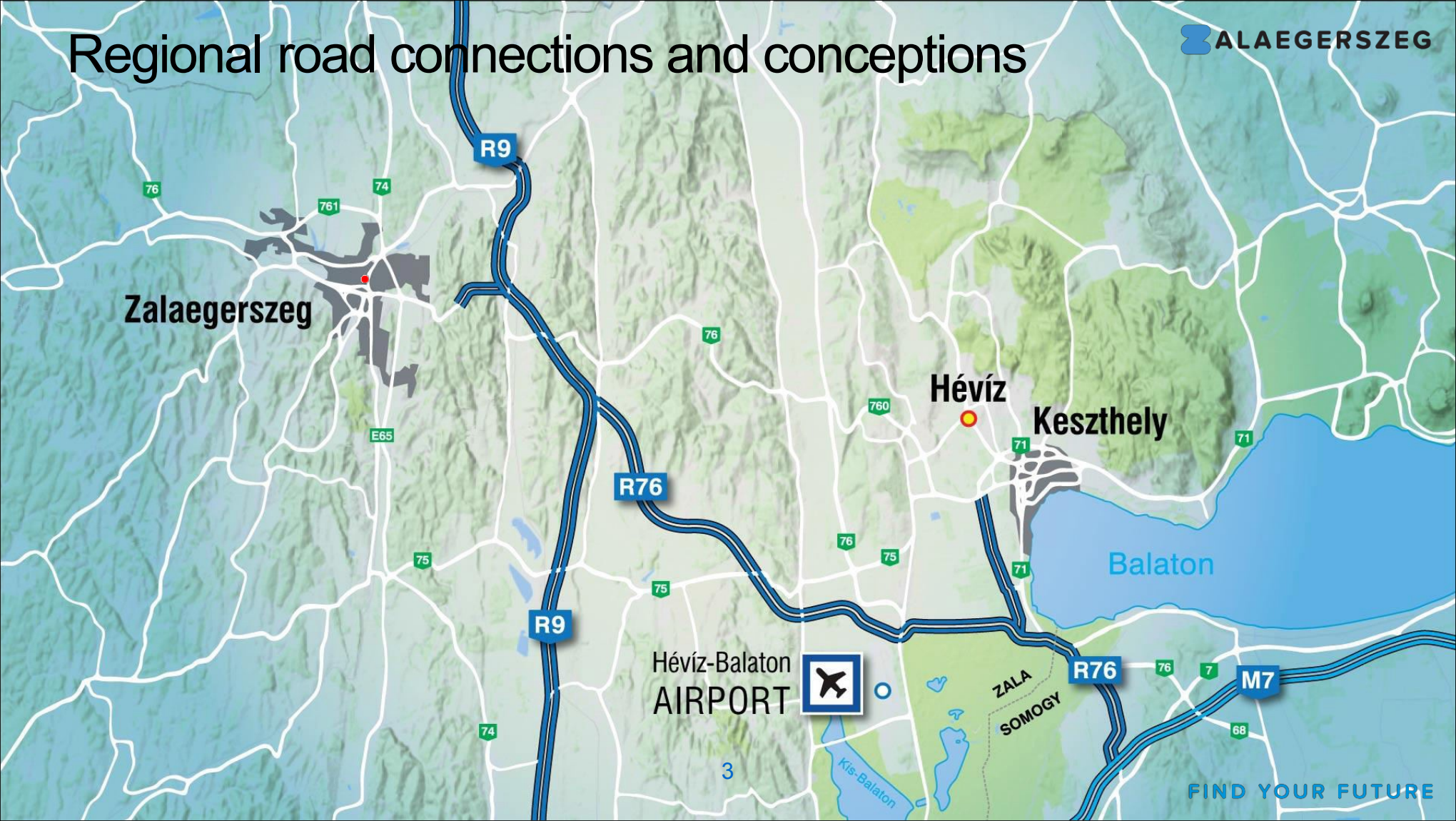
Vehicle-geography

ALAEGERSZEG



FIND YOUR FUTURE

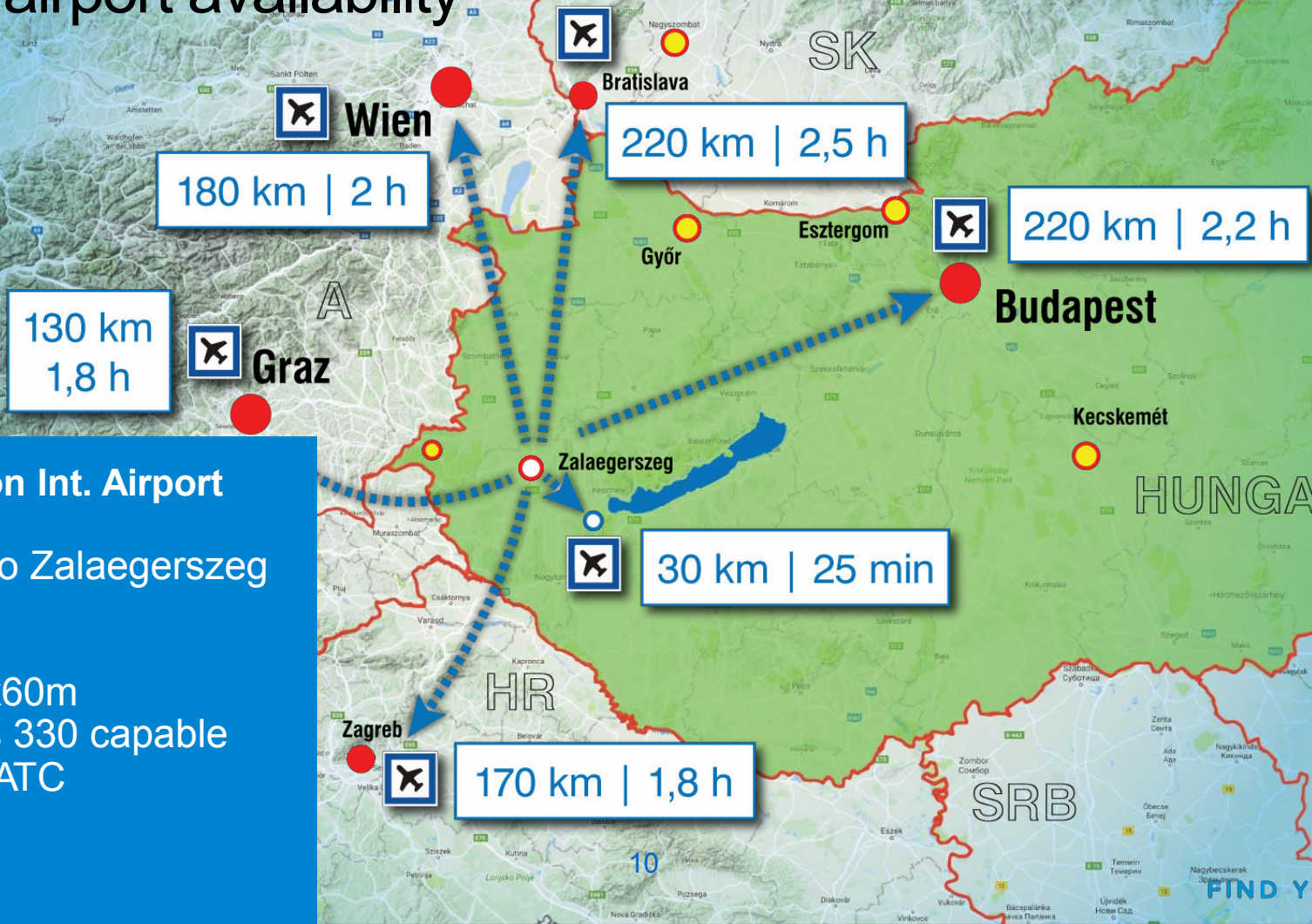
Regional road connections and conceptions



Road infrastructure improvements towards Austria



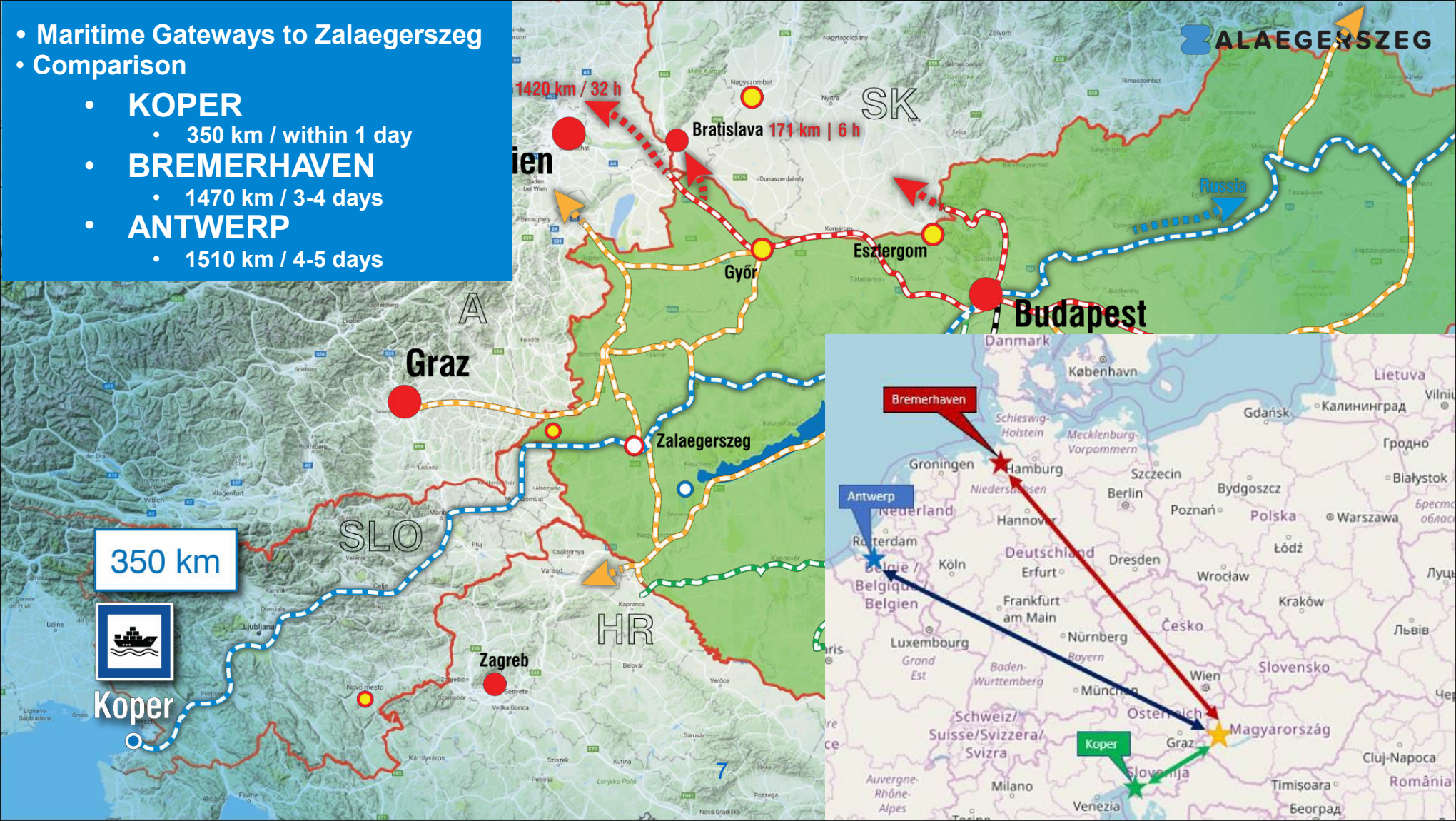
Local airport availability



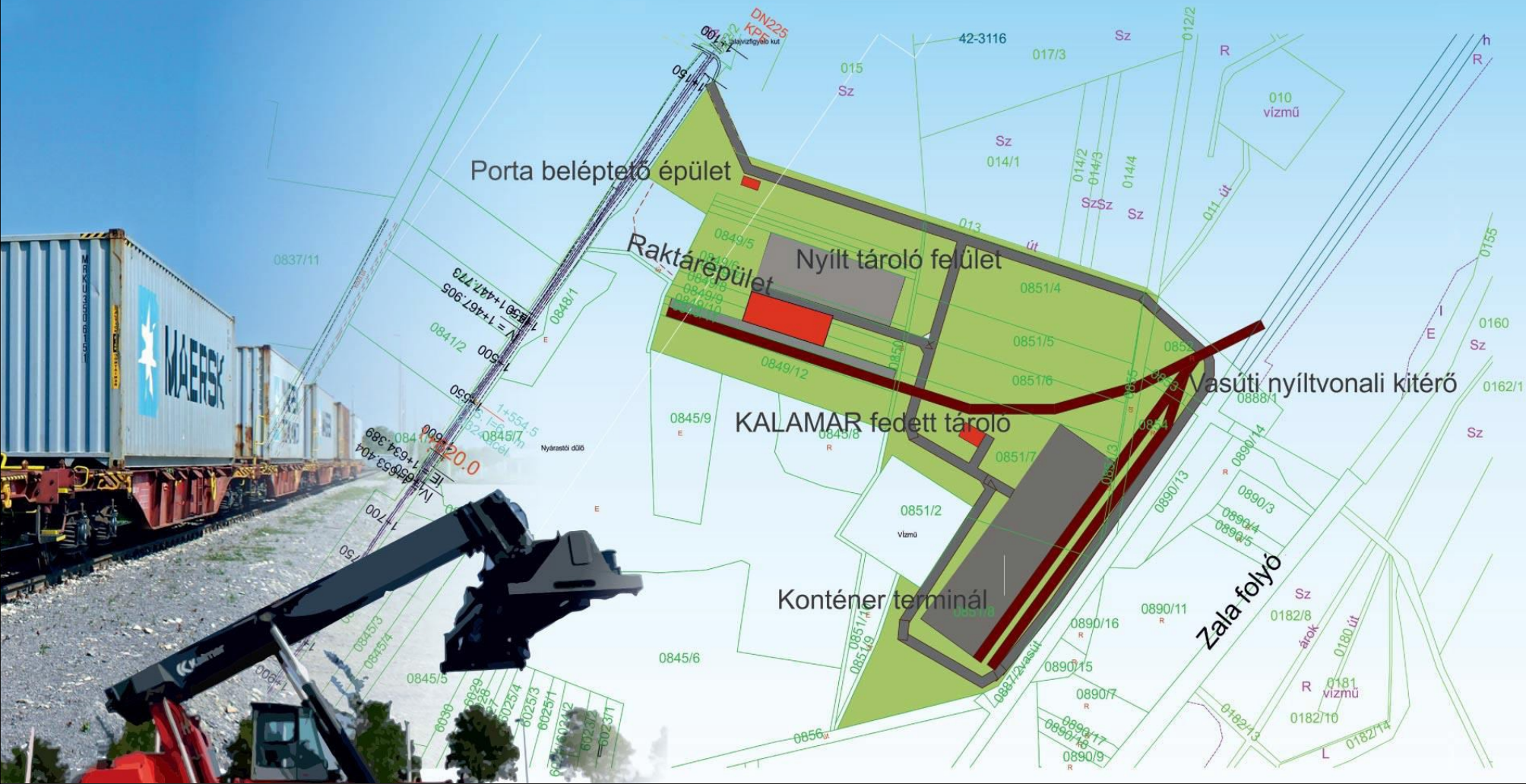
Hévíz-Balaton Int. Airport

- Only 30km to Zalaegerszeg
- IATA: SOB
- ICAO: LHSM
- RWY: 2500x60m
- B747/Airbus 330 capable
- ILS | PAPI | ATC


- 1510 km / 4-5 days



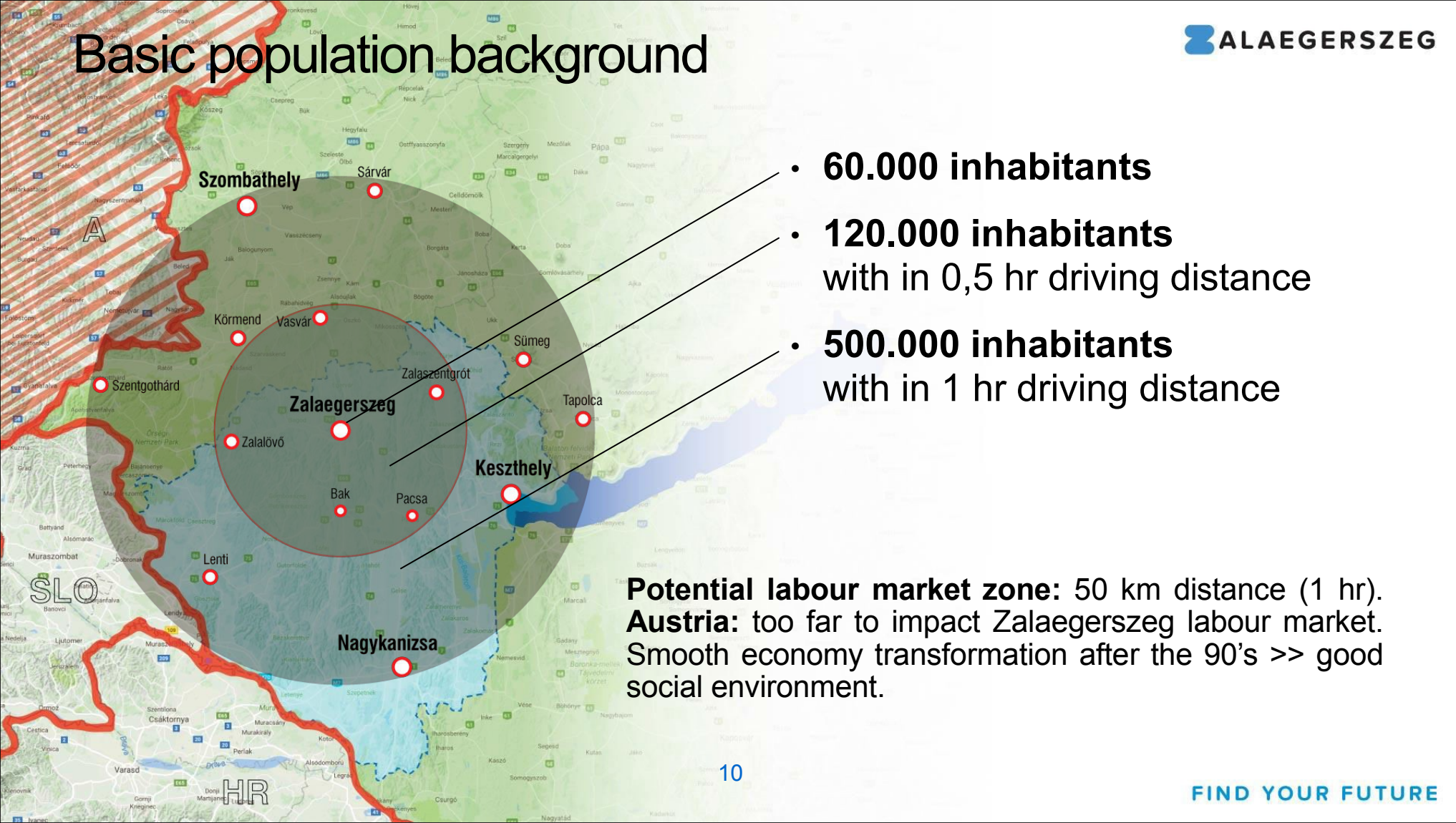
Logistic & Container Yard



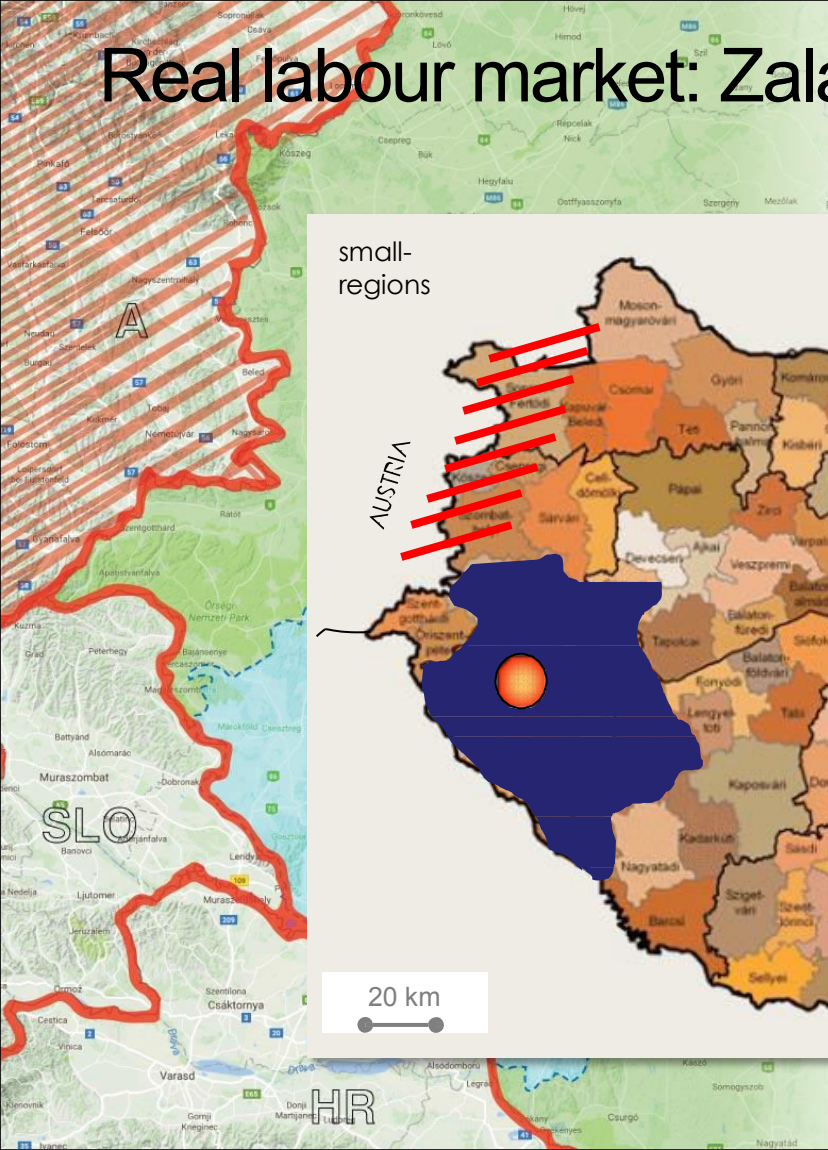
Logistic & Container Yard

- 
- 650 meters of usable, loadable track
 - Length in axle weight class D (225 kN)
 - 350 x 30 m reachstacker alley
 - 350 x 30 m gravel yard for container storage
 - 30 truck parking, 50 car parking
 - Yard with basic perimeter fence and lighting, high security
 - Office building
 - utilities, internet

Basic population background



Real labour market: Zalaegerszeg city-impact



**TTL 385.509 people
population**



**TTL 10.966
unemployed people**

(2017, Dec data)

This is the city-conurbation that is crucial for a new industrial player:

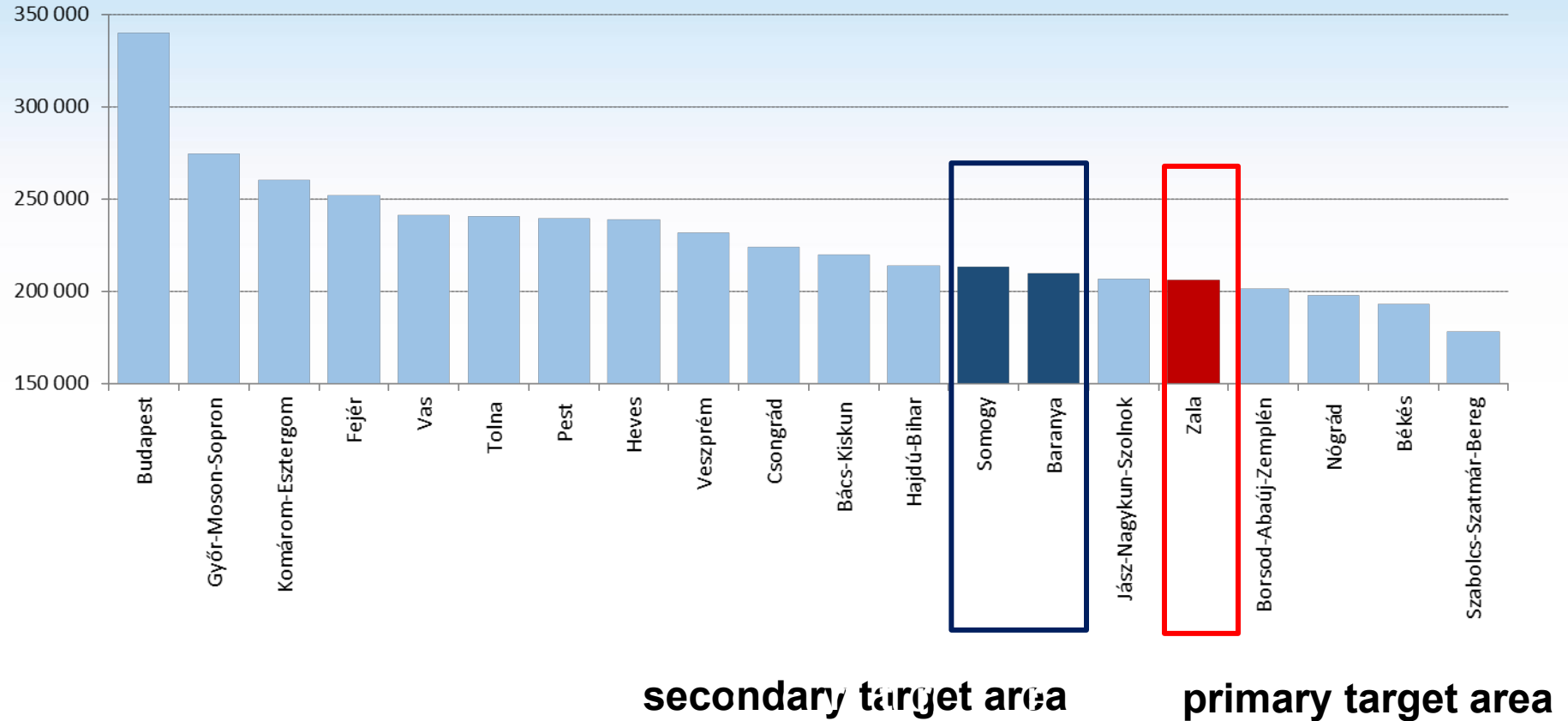


(Northern area (Vas County) is partly affected do the limited labour availability)

HIGHER-EDUCATION TTL 1100 people

BGE (economics)	PE (technical)	PTE (medical)	BME (technical)
<p>LOCAL FACULTY OF FINANCE & ACCOUNTING COLLEGE</p> <ul style="list-style-type: none">• finance&accounting• economics-informatics• management	<p>ZALAEGERSZEG EDUCATION & RESEARCH CENTER</p> <ul style="list-style-type: none">• mechatronics engineer (mechanical technologies, engineering)	<p>LOCAL FACULTY OF HEALTH COLLEGE</p> <ul style="list-style-type: none">• nurse• physiotherapist• health managemen t• health insurance	<ul style="list-style-type: none">• „Testing Engineer” BEng, from 2018

Average gross monthly salary level 2017 Q4 (HUF)



Industrial Zone for investors

 **ALAEGRSZEG**
FIND YOUR FUTURE



All About Zalaegerszeg

- Green-Town, Eco-Town
- Available Industrial Areas
- Built up infrastructure (gas, electricity and water supply) to accommodate new investment projects
- Ownership and land status enables easy start up

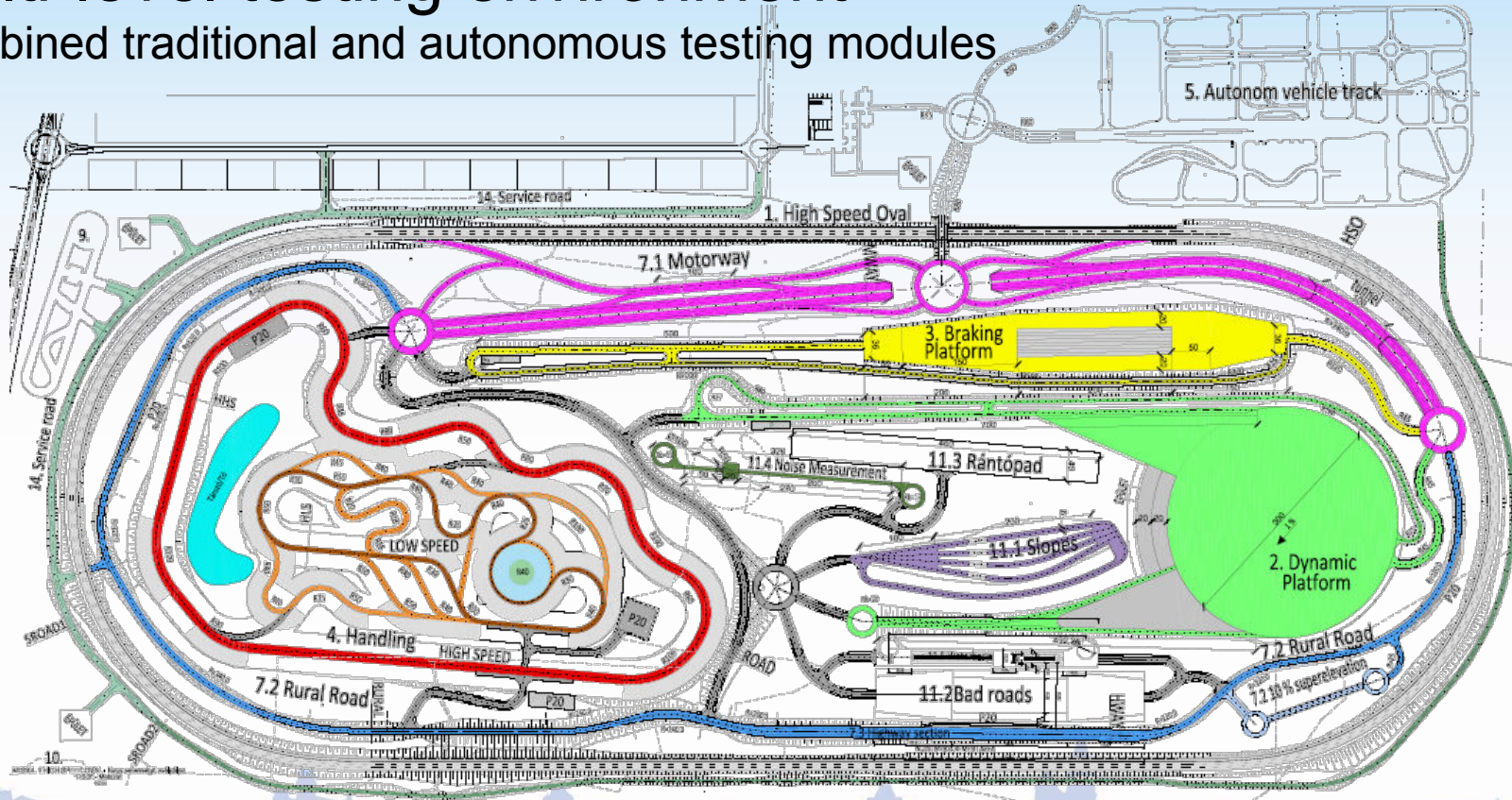




- Smart mobility
 - Utilize synergies with the proving ground
 - Smart city traffic solutions, connected cars
 - Smart road concept (R76 highway)
- Smart Environment
 - Energy efficiency
 - Increasing residential environmental awareness
 - E-cars and buses
- Smart governance
 - E-administration
 - Elimination of red tape

Multi-level testing environment

Combined traditional and autonomous testing modules



Zalaegerszeg Industrial Zone Map



Proving ground (combined traditional and autonomous test track)

- Currently under construction

Offered land plot – Option 1.

- 110 ha available industrial area
- land owner: Municipality of Zalaegerszeg

Offered land plot – Option 2.

- 63 ha available industrial area
- land owner: InPark (state owned firm)

Pannonia Logistics & Container Yard

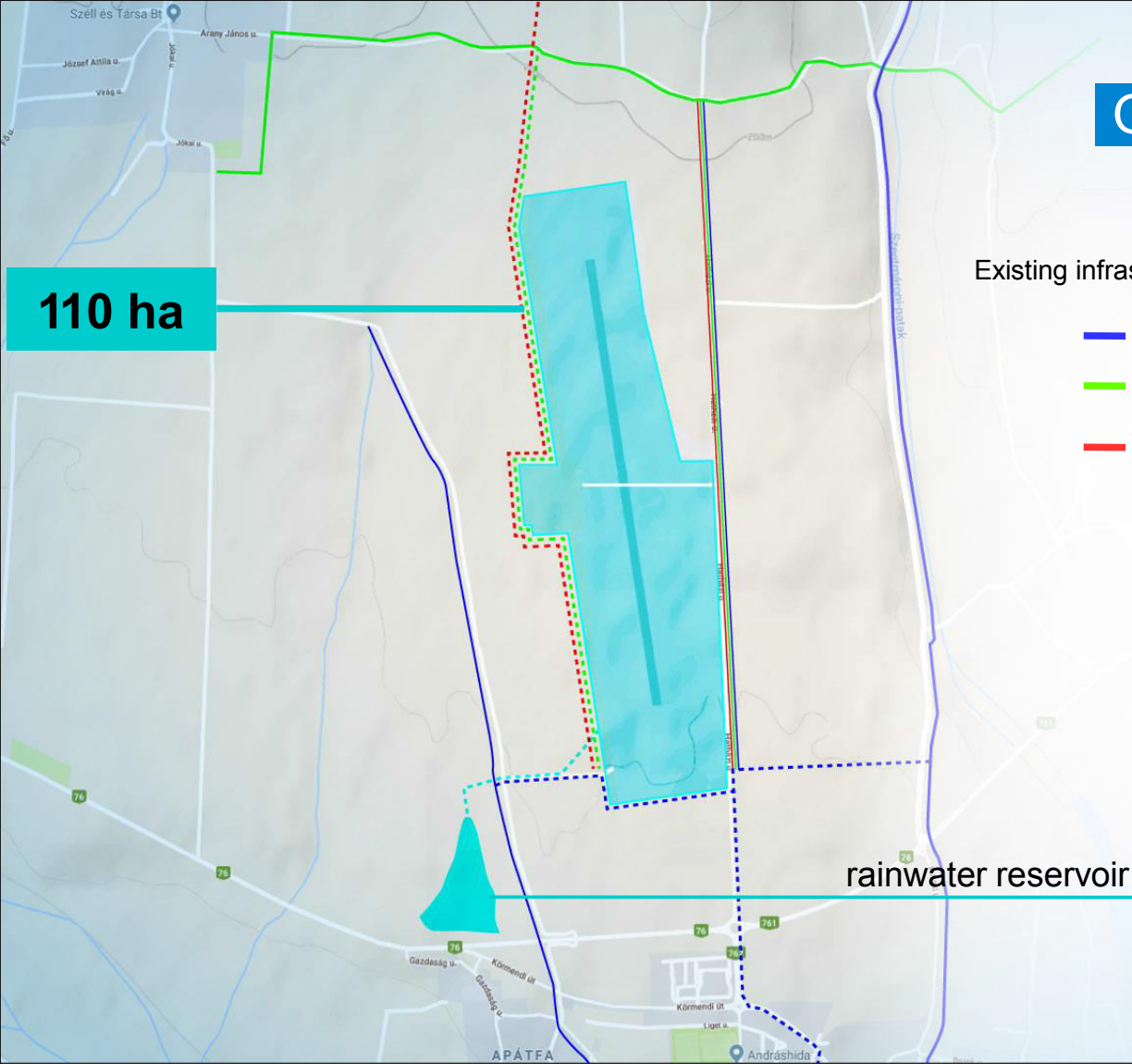
- Preparation phase (government approval)

FLEX Industrial Park

Southern Industrial Park

Offered landplot - Option 1.

110 ha

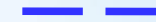


Existing infrastructure

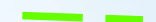
Planned infrastructure



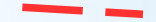
Water



Gas



Electricity



Land owner: Municipality of Zalaegerszeg
Size of the land: 110 ha
Public utilities: available for construction period
Deployment of public utilities for SOP:
 2-2,5 years from date of land purchase (2020 Q4)

Offered landplot - Option 2.

Multi-level testing environment

cca. 63 ha
available
industrial
area

Land owner: InPark (state owned company)
Size of the land: 63 ha
Public utilities: available
Deployment of public utilities:
Further discussions with InPark



THANK YOU FOR YOUR ATTENTION