

**The impact of locational strategies of
advanced producer services
on the metropole cities' economic positions
in Central-Eastern Europe**

Katalin Döbrönte

ELTE, Earth Science Doctoral School

Dualities in Regional Sciences

Hungarian Regional Studies Association

Mosonmagyaróvár, October 19-20. 2017.

Approach

- Cities are centres of economic activity
- Cities are nodal points of international flows of capital, information, labour
- Functional centrality of large cities
- Globalization, global urban network, global cities – mainly metropolises
- EU urban policy: global integration of metropole cities, polycentric development of small and medium sized cities (Leipzig Charter)
- Central European metropolises in 16 countries
- Indicator: location strategies of advanced producer services

Global economic cooperation approach

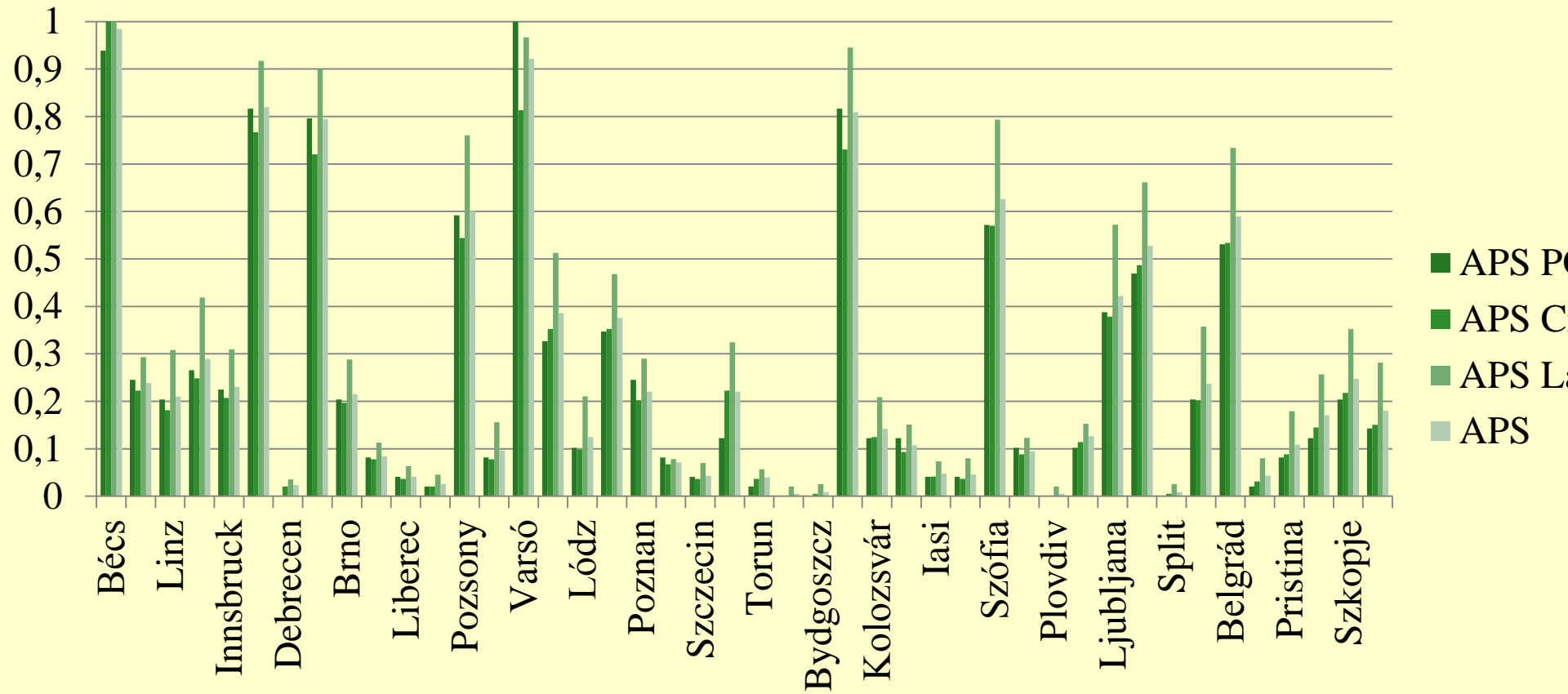
- Number and complexity of business transactions have multiplied in globalization, growth of complexity and volume of central functions of MNE, service intensity of industrial production increased, multiplied demand for services - extension of APSs
- Success of service providers determined by their locations, which cities they choose to include in their networks
- Advanced producer service location factors: critical mass of economic performance, highly skilled labour, accessibility
- Cities in better positions with advanced producer service location (Taylor 2001, Sassen 1991)

	Cities with a population above 1 million	Cities with a population between 500.000 - 1 million	Cities with a population between 100.000 - 500.000	summa
Austria	1	0	4	5
Hungary	1	0	1	2
Czech Republic	1	0	4	5
Slovakia	0	0	2	2
Poland	1	4	6	11
Romania	1	0	4	5
Bulgaria	1	0	2	3
Moldova	0	1	0	1
Slovenia	0	0	1	1
Croatia	0	1	1	2
Bosnia Herzegovina	0	1	0	0
Serbia	1	0	1	2
Kosovo	0	0	1	1
Montenegro	0	0	1	1
Macedonia	0	0	1	1
Albania	0	0	1	1
	7	7	30 (91/ 39)	44

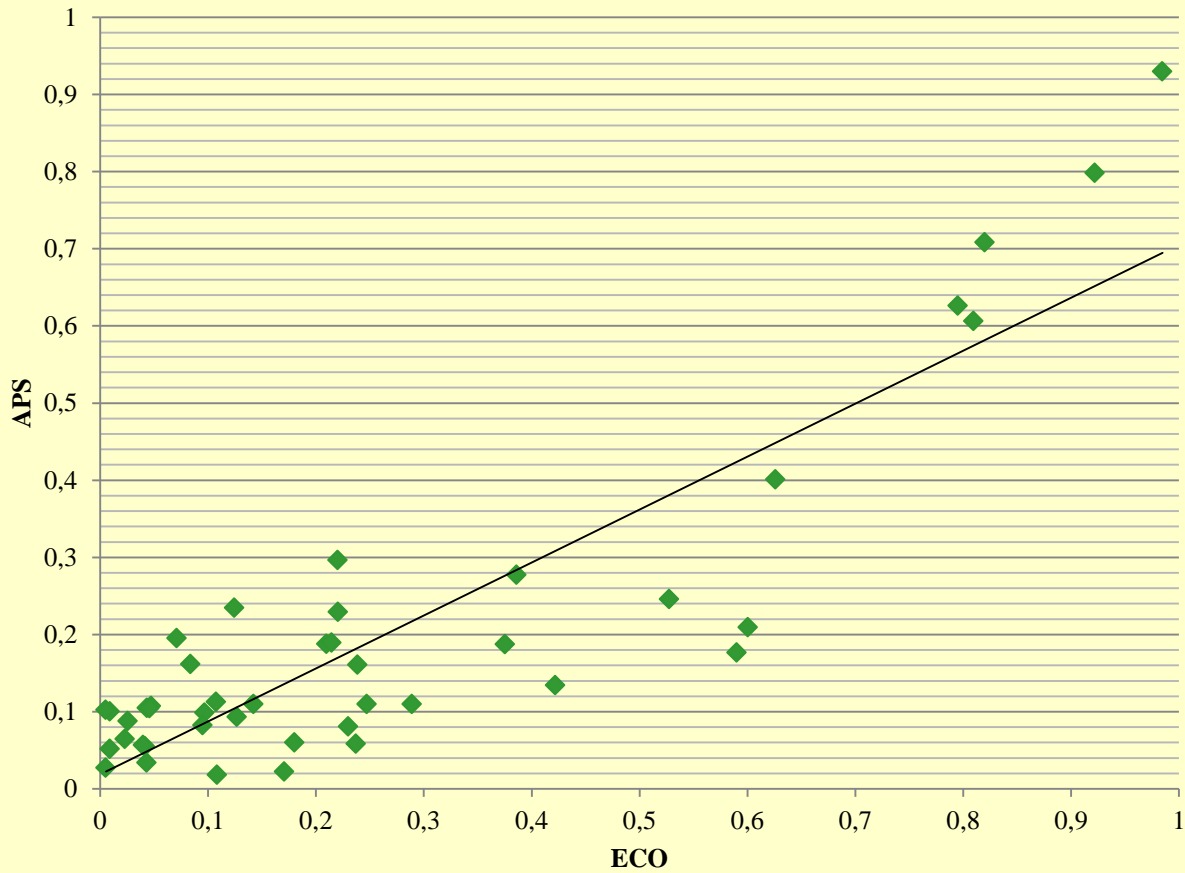
APS impact on the city

The relation of the APS and the city is multiple:

- the location decision of the APS, that is the presence of the service company
- the service value of a city identifies the size of the nodal point in the network,
- the quantity of flows measure the number of interactions among city-pairs among offices of a certain APS. The measurement of network relations points out the ratio of all APS business interactions in the macro region appearing in a city and provide empirical evidence



ECO részindex

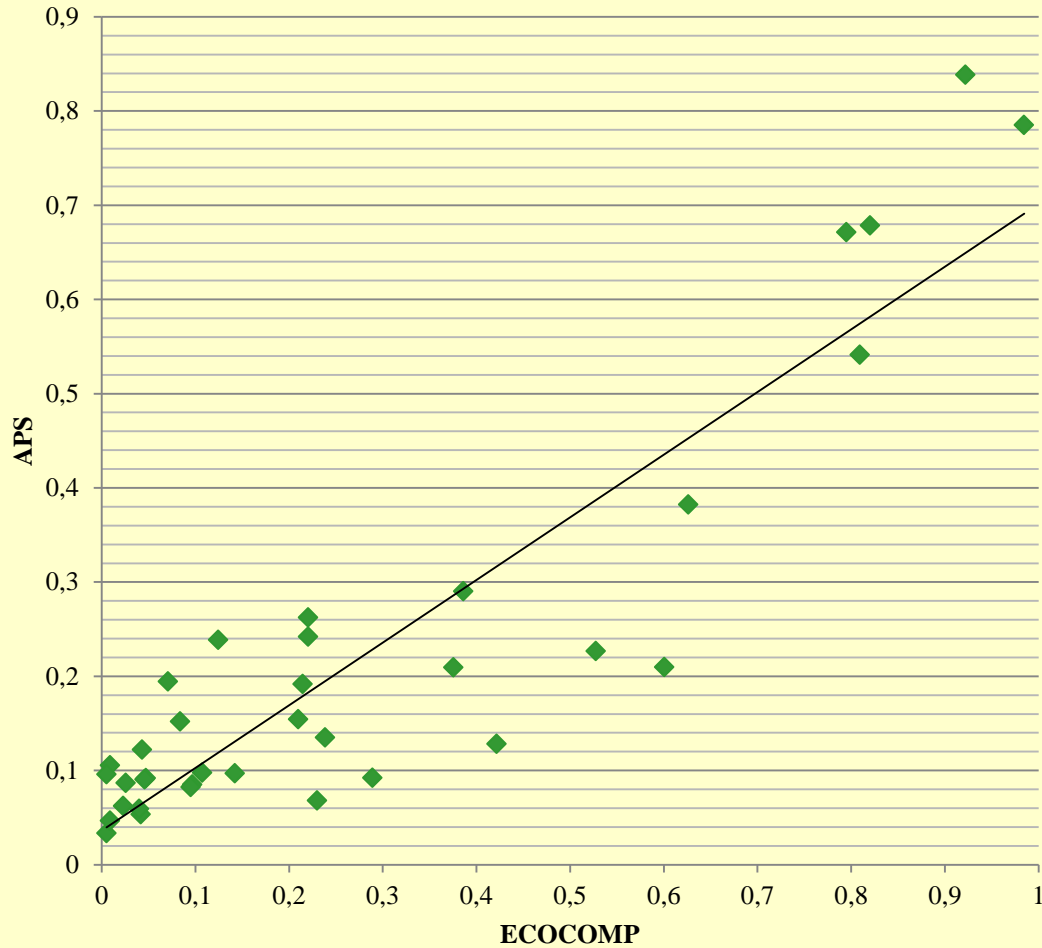


◆ ECO
részindex

— Lineáris
(ECO
részindex)

$$y = 0,686x + 0,0191$$
$$R^2 = 0,7831$$

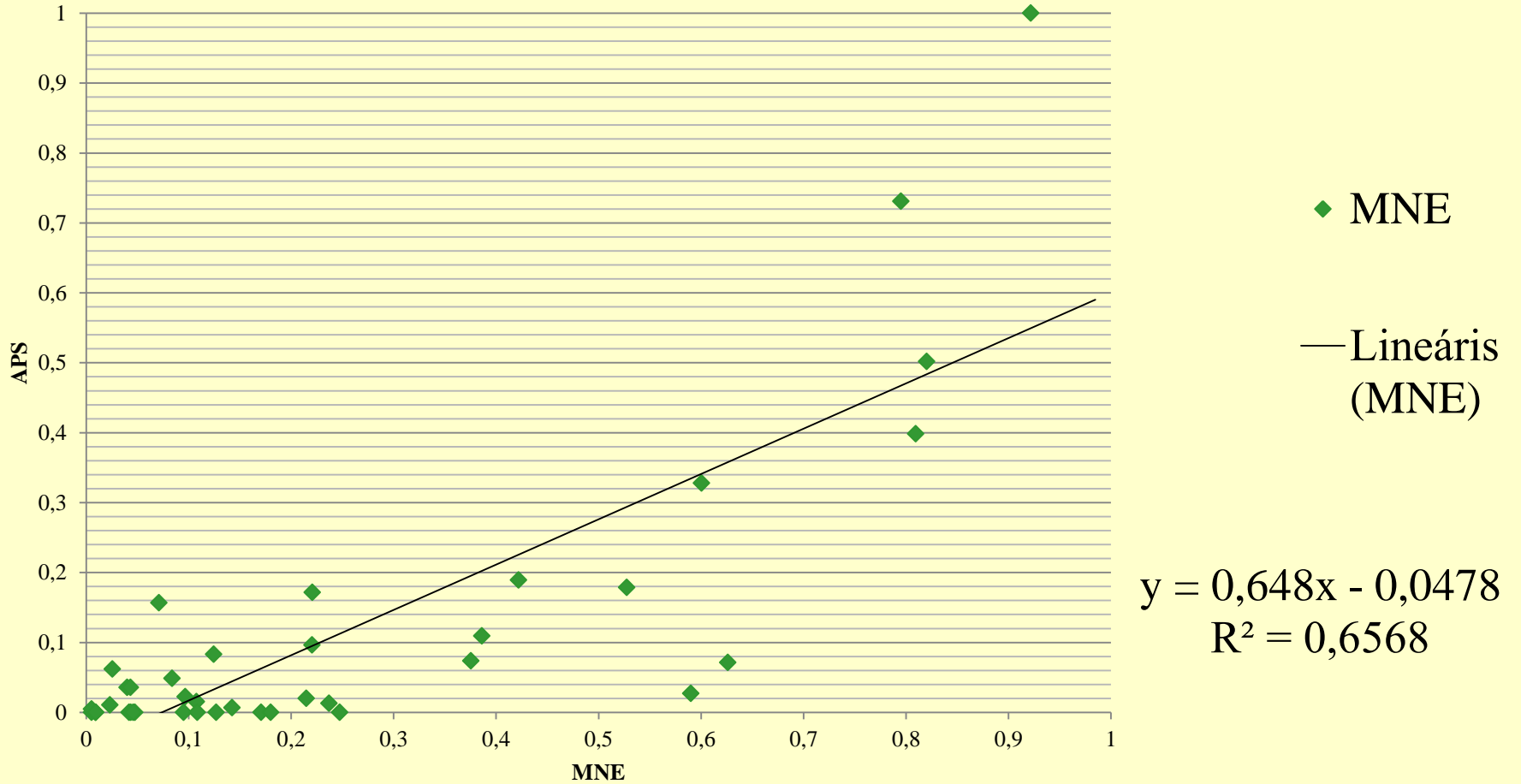
ECOCOMP

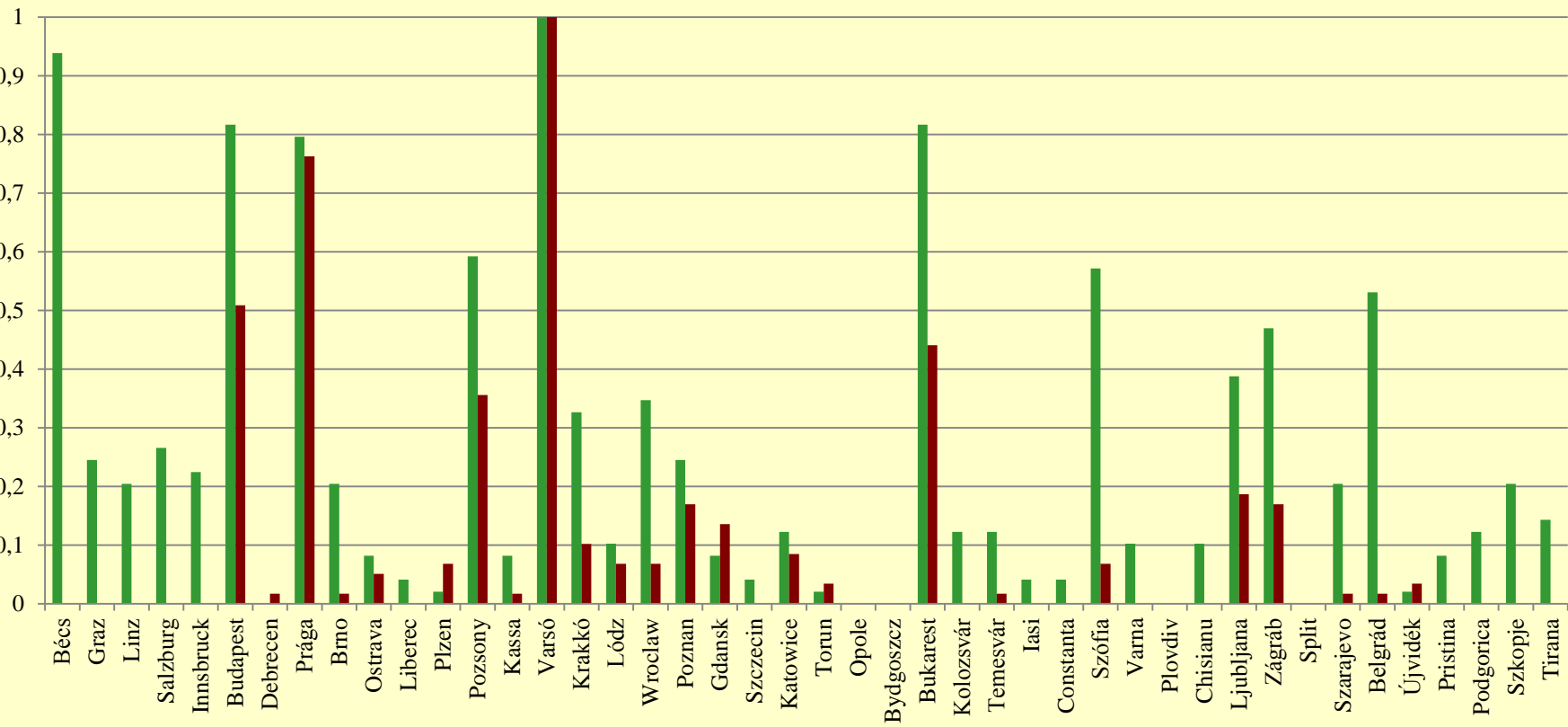


◆ ECOCOMP
— Lineáris
(ECOCOMP)

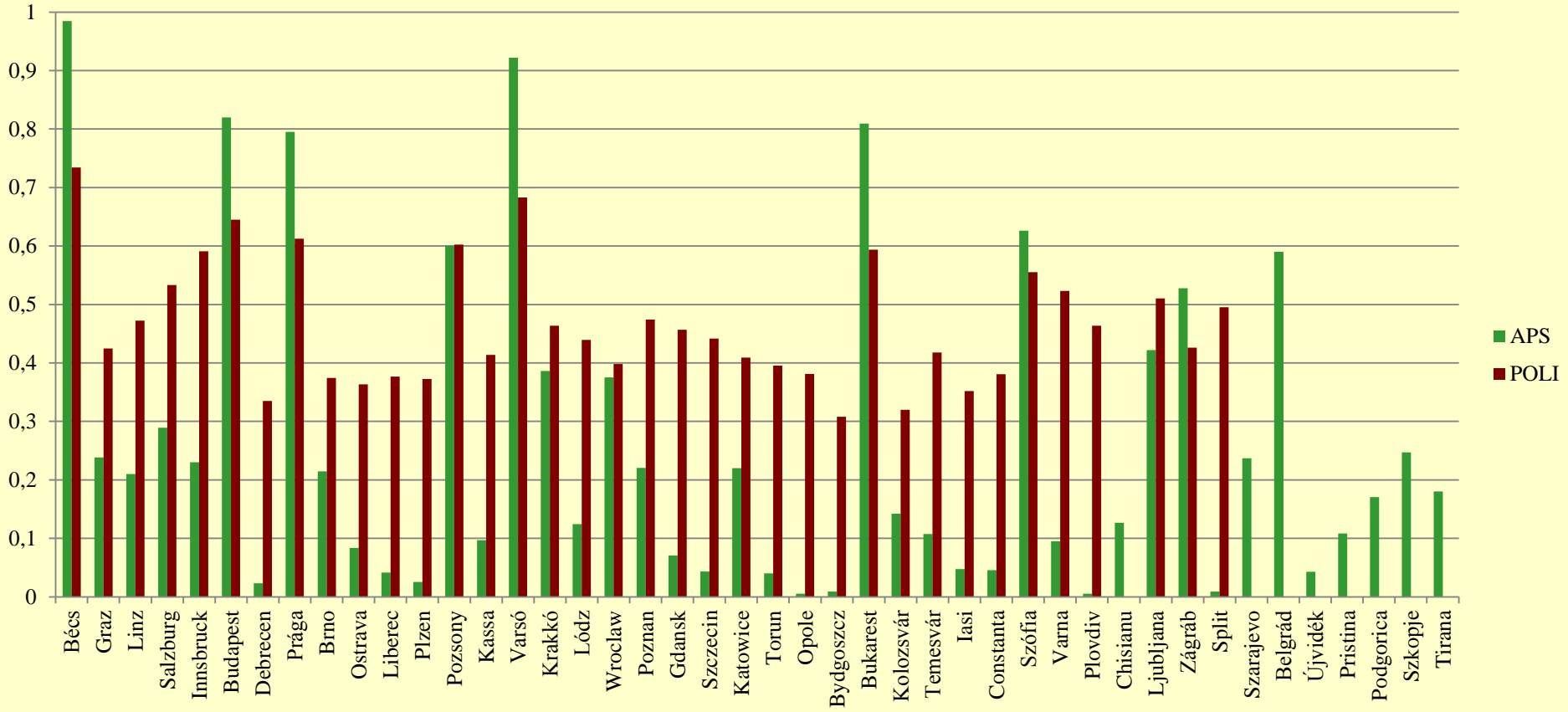
$$y = 0,6651x + 0,0363$$
$$R^2 = 0,8259$$

MNE

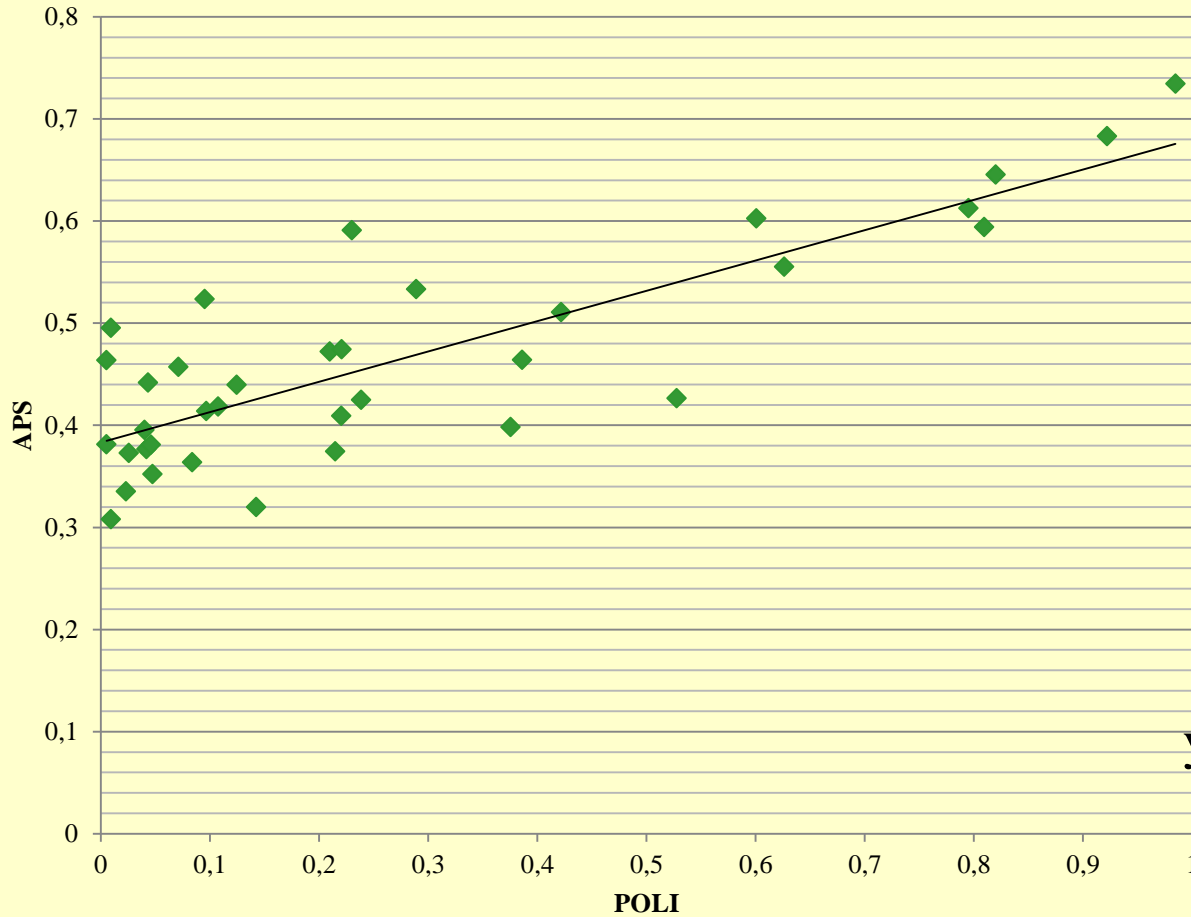




■ APS PO
 ■ MNE PC



POLI



◆ POLI

$$y = 0,297x + 0,3833$$
$$R^2 = 0,6818$$

Thank you for your attention!